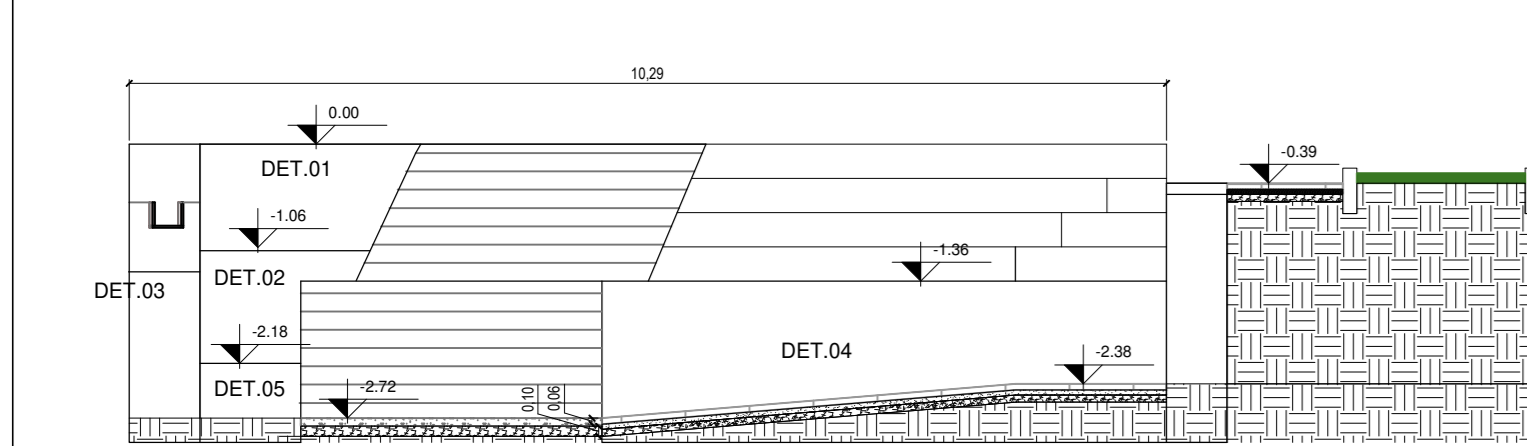
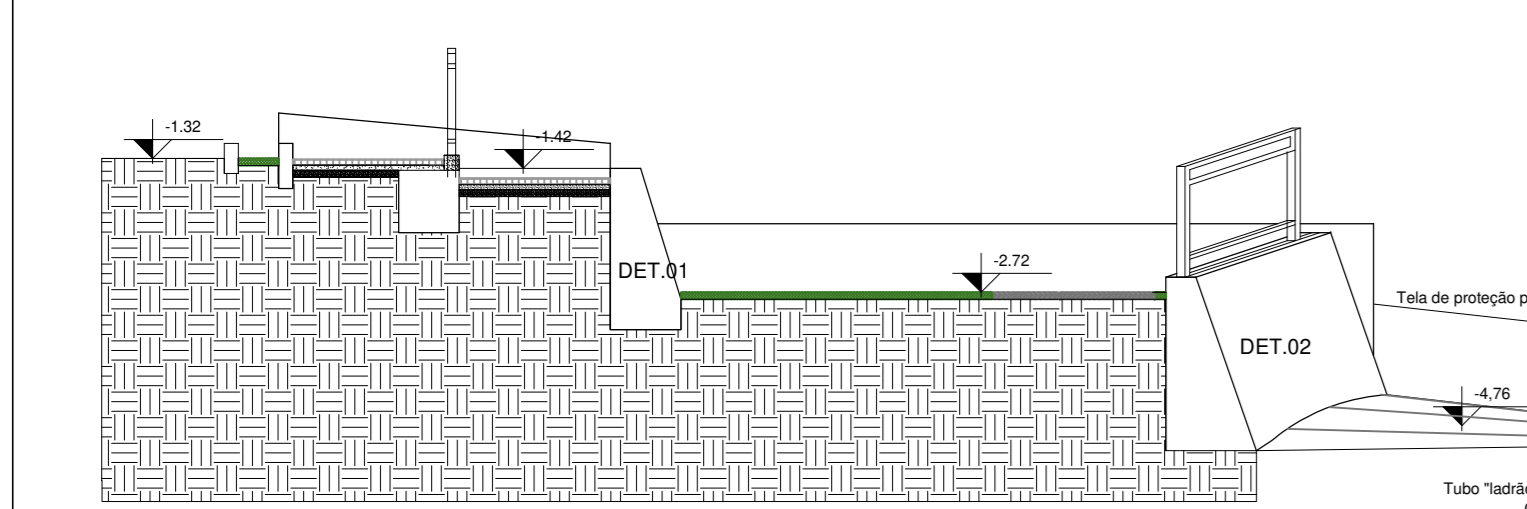




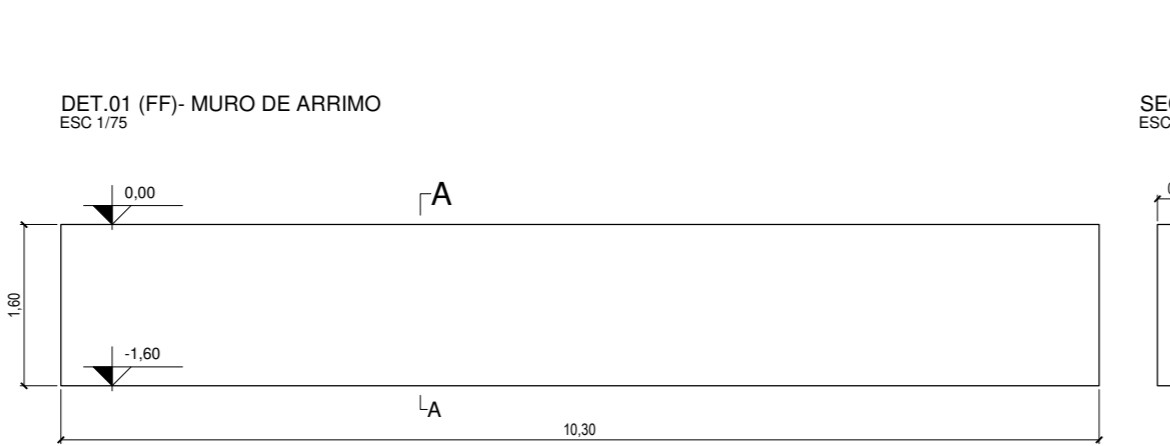
**IMPLANTAÇÃO**  
1/75



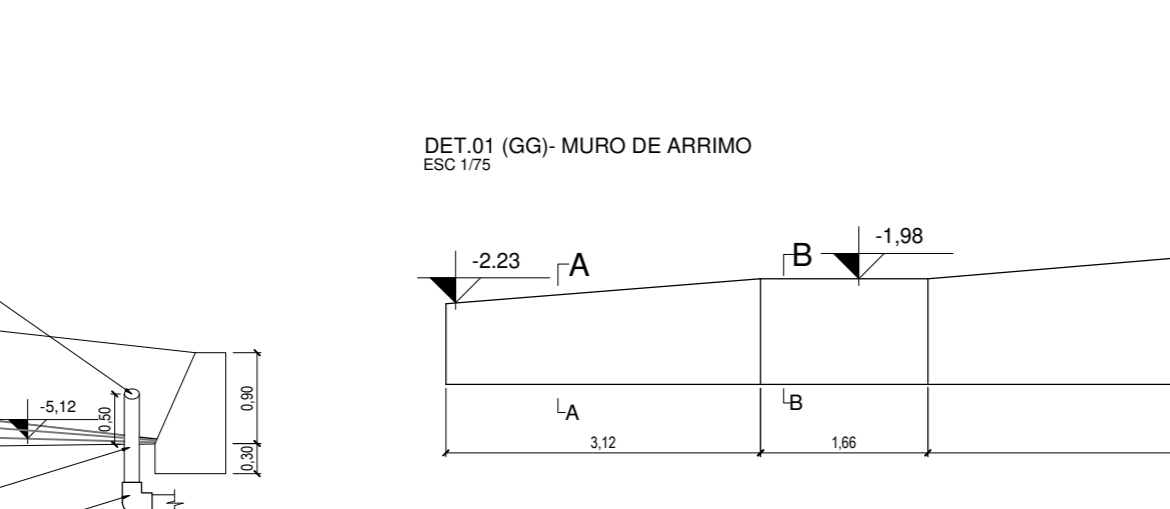
**CORTE FF**  
1/75



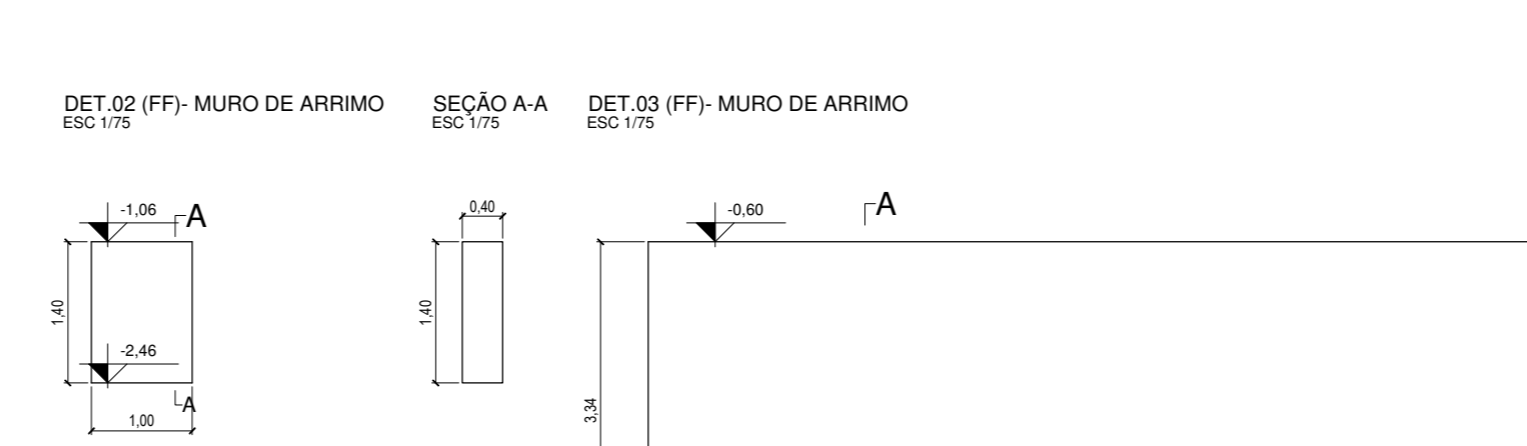
**CORTE GG**  
1/75



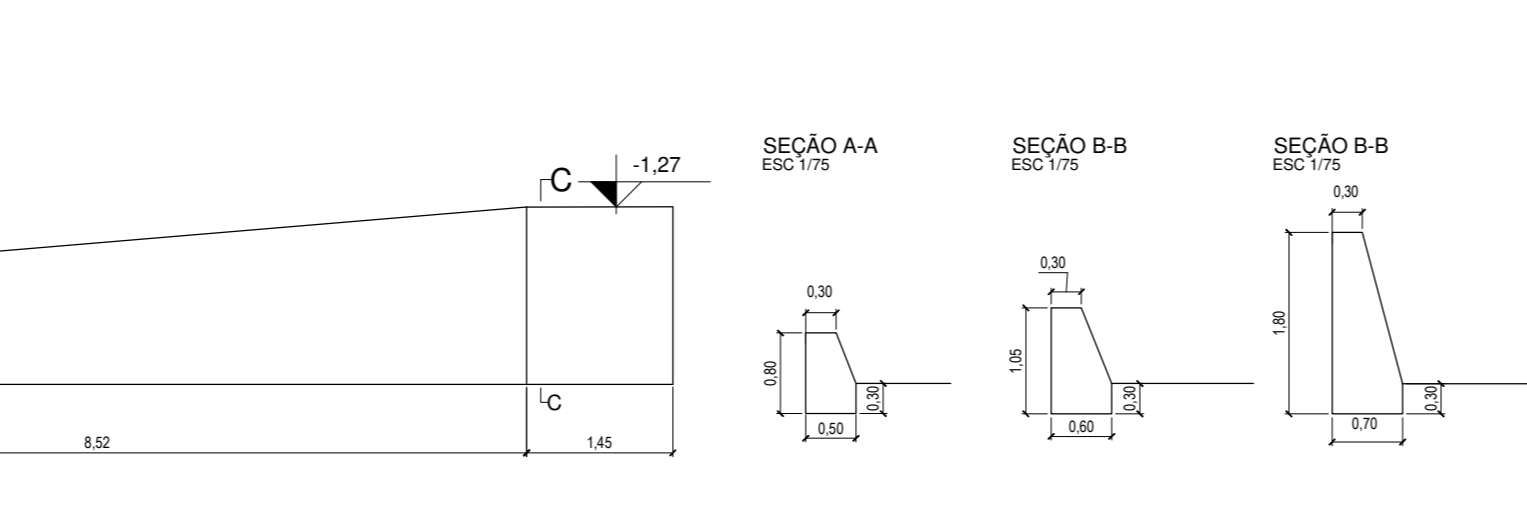
**DETALHES - CORTE FF**  
1/75



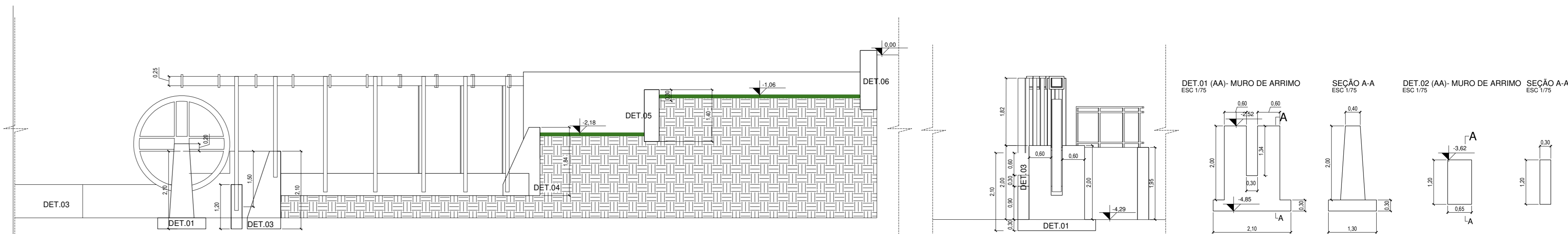
**DETALHES - CORTE GG**  
1/75



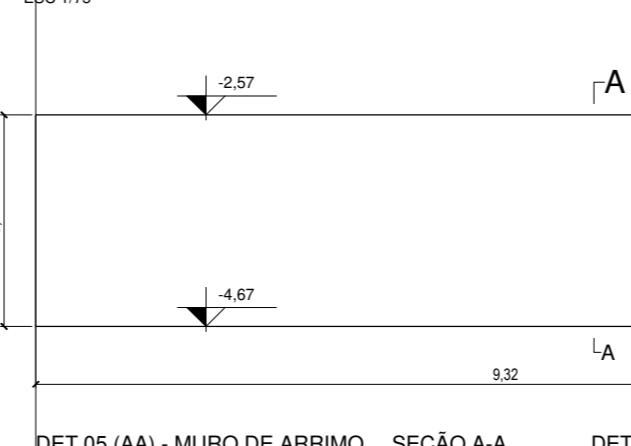
**DETALHES - CORTE FF**  
1/75



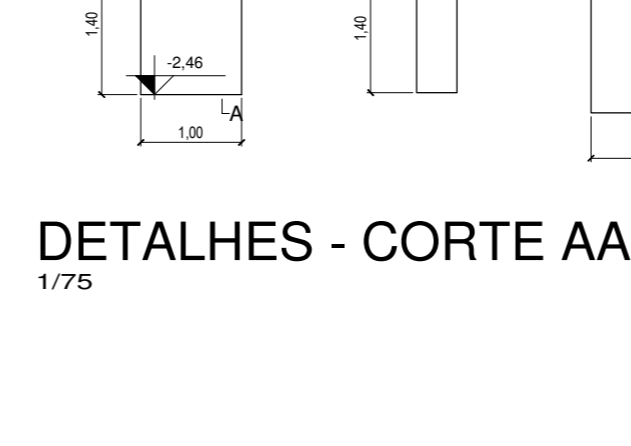
**DETALHES - CORTE GG**  
1/75



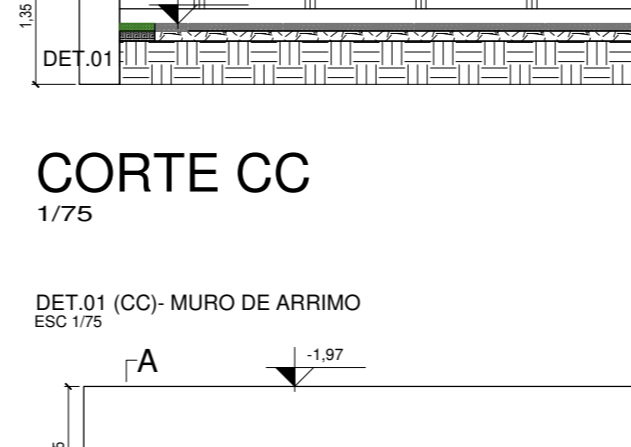
**CORTE AA**  
1/75



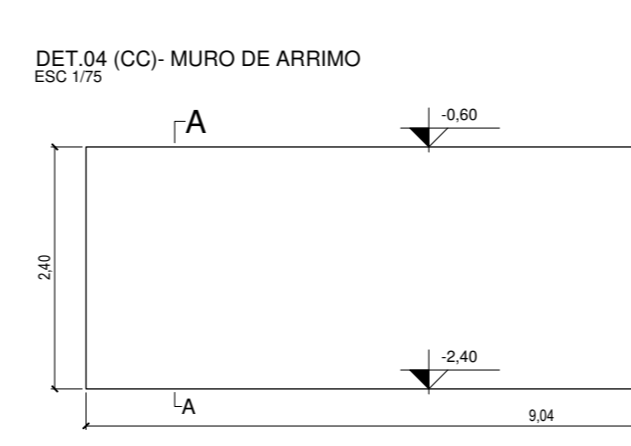
**DETALHES - CORTE AA**  
1/75



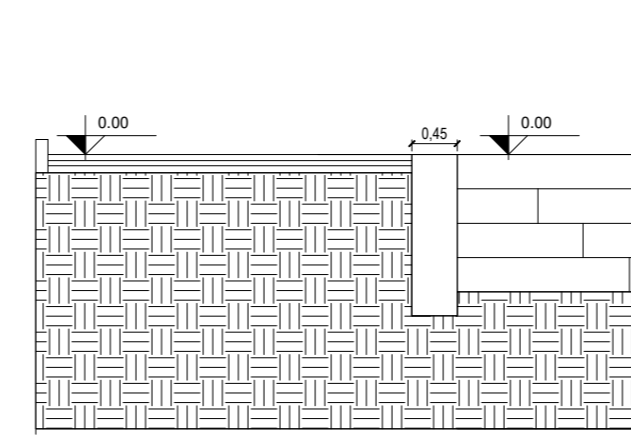
**DETALHES - CORTE BB**  
1/75



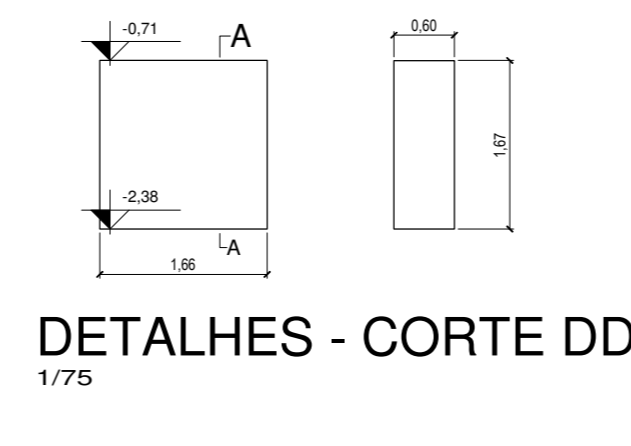
**DETALHES - CORTE CC**  
1/75



**DETALHES - CORTE CC**  
1/75



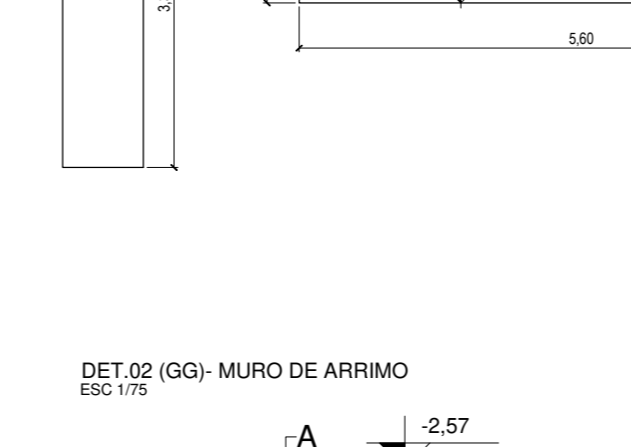
**DETALHES - CORTE DD**  
1/75



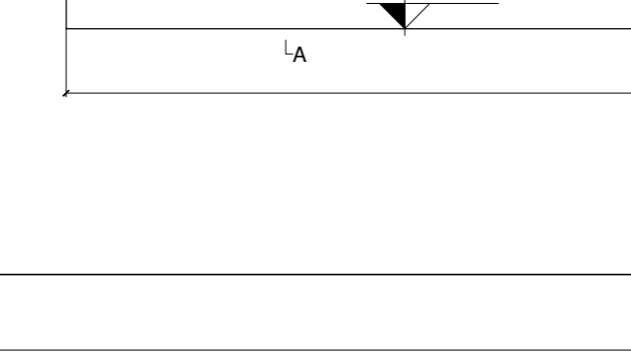
**DETALHES - CORTE DD**  
1/75



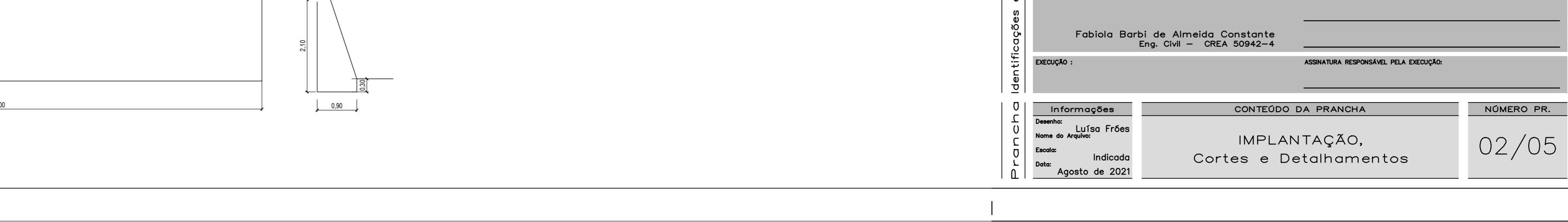
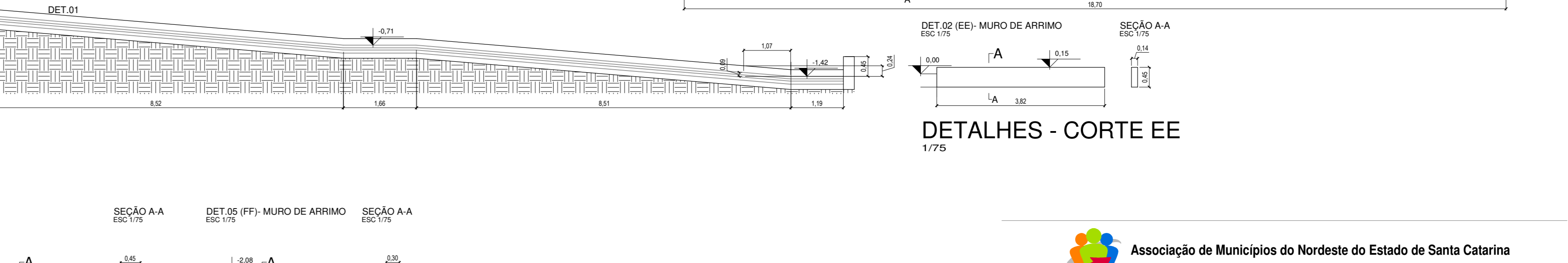
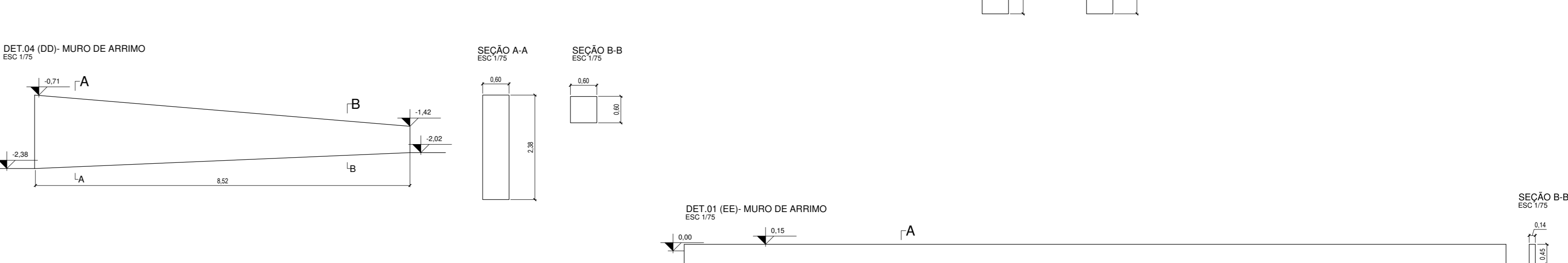
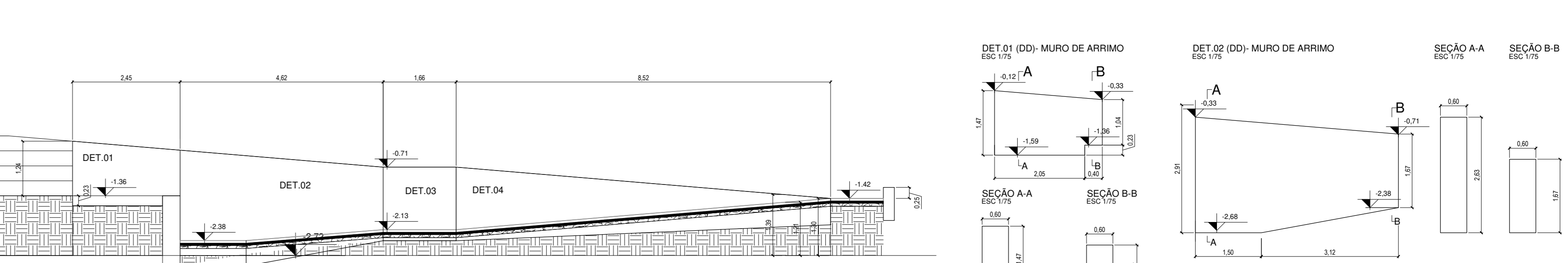
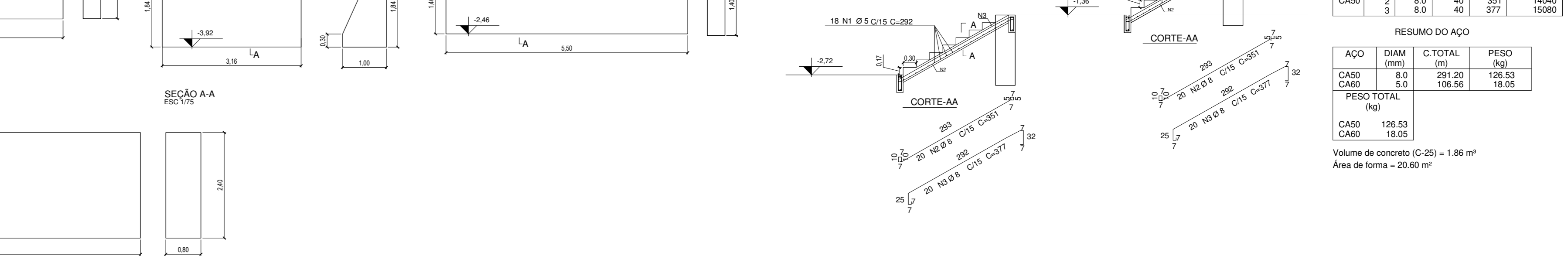
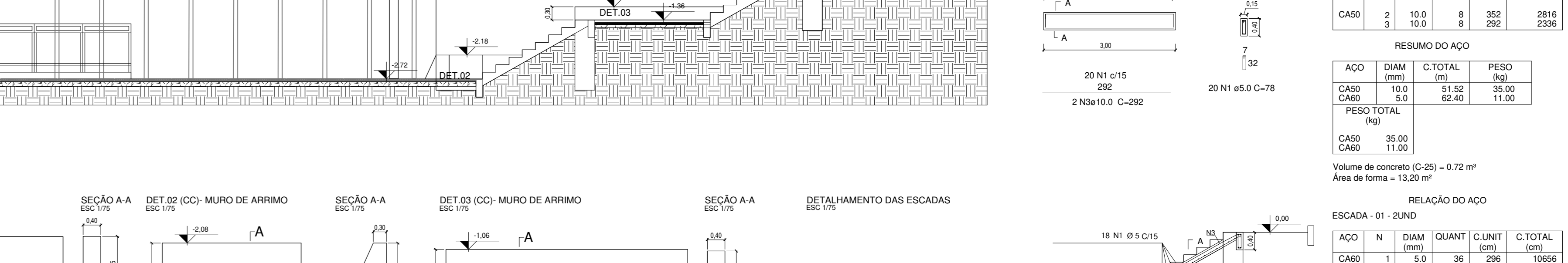
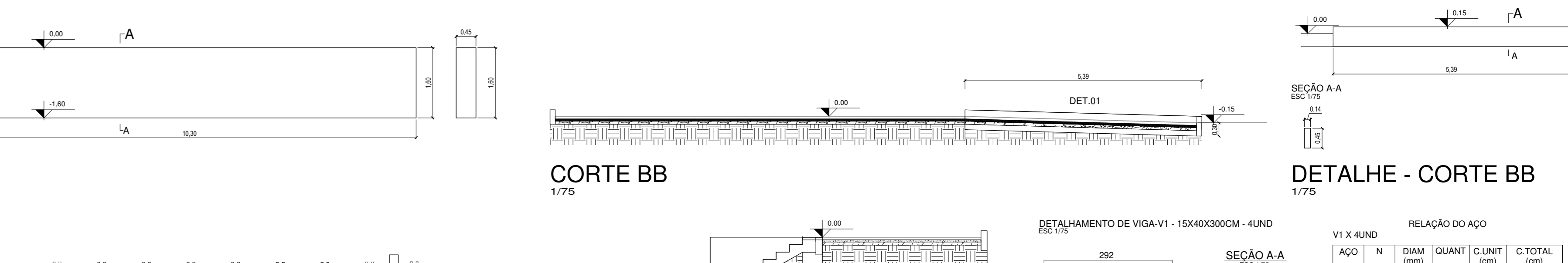
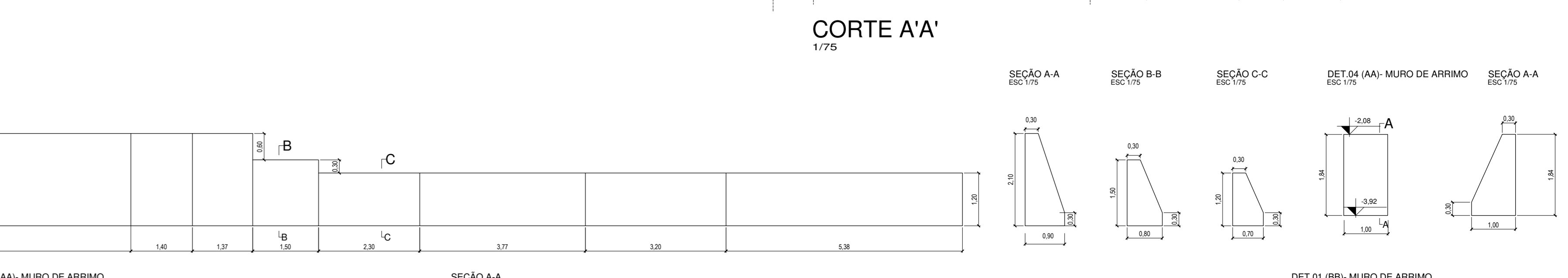
**DETALHES - CORTE EE**  
1/75



**DETALHES - CORTE EE**  
1/75



**DETALHES - CORTE GG**  
1/75



**RELAÇÃO DO AÇO**

ACO	N	DIAM (mm)	QUANT (unidade)	C.TOTAL (mts)	PESO (kg)
CA50	1	8.0	90	720	5640
CA50	2	10.0	9	90	702
CA50	3	10.0	9	90	702
<b>PESO TOTAL</b>					<b>13364</b>
CA50					35.00
CA50					11.00

Volume de concreto (C-25) = 0.72 m³  
Área de forma = 13.32 m²

**RELAÇÃO DO AÇO**

ACO	N	DIAM (mm)	QUANT (unidade)	C.TOTAL (mts)	PESO (kg)
CA50	1	5.0	36	360	10966
CA50	2	8.0	40	360	14340
CA50	3	8.0	40	360	14340
<b>PESO TOTAL</b>					<b>29646</b>
CA50					128.53
CA50					18.05

Volume de concreto (C-25) = 1.86 m³  
Área de forma = 20.60 m²

**RELAÇÃO DO AÇO**

ACO	N	DIAM (mm)	QUANT (unidade)	C.TOTAL (mts)	PESO (kg)
CA50	1	5.0	36	360	10966
CA50	2	8.0	40	360	14340
CA50	3	8.0	40	360	14340
<b>PESO TOTAL</b>					<b>29646</b>
CA50					128.53
CA50					18.05

Volume de concreto (C-25) = 1.86 m³  
Área de forma = 20.60 m²

**RELAÇÃO DO AÇO**

ACO	N	DIAM (mm)	QUANT (unidade)	C.TOTAL (mts)	PESO (kg)
CA50	1	5.0	36	360	10966
CA50	2	8.0	40	360	14340
CA50	3	8.0	40	360	14340
<b>PESO TOTAL</b>					<b>29646</b>
CA50					128.53
CA50					18.05

Volume de concreto (C-25) = 1.86 m³  
Área de forma = 20.60 m²

**RELAÇÃO DO AÇO**

ACO	N	DIAM (mm)	QUANT (unidade)	C.TOTAL (mts)	PESO (kg)
CA50	1	5.0	36	360	10966
CA50	2	8.0	40	360	14340
CA50	3	8.0	40	360	14340
<b>PESO TOTAL</b>					<b>29646</b>
CA50					128.53
CA50					18.05

Volume de concreto (C-25) = 1.86 m³  
Área de forma = 20.60 m²

**Associação de Municípios do Nordeste do Estado de Santa Catarina**  
AMNESC

**MEMORIAL SERRARIA**  
Área total à construir: 409,30 m²

**PREFEITURA MUNICIPAL DE CAMPO ALEGRE**  
Endereço: Rodovia 070 - CAMPO ALEGRE/SC

<b>ADMINISTRAÇÃO:</b>	ADMINISTRADOR RESPONSÁVEL:
Prefeito(a) de Municipal de Campo Alegre	
<b>PROJETO:</b>	ADMINISTRADOR RESPONSÁVEL PELO PROJETO:
Arquiteto e Urbanista - CAU/SC: A40955-3	
Fabiola Darli de Almeida Constante Eng. Civil - CREA 50942-4	
<b>REVISÃO:</b>	ADMINISTRADOR RESPONSÁVEL PELA EXECUÇÃO:

<b>Informações:</b>	<b>CONTÉUDO DA PRANCHA:</b>	<b>NÚMERO PR.</b>
Nome: Lúcio Fróis	IMPLANTAÇÃO,	02/05
Nome de Arquivo:	Cortes e Detalhamentos	
Data: Indefinida		
Data: Agosto de 2021		