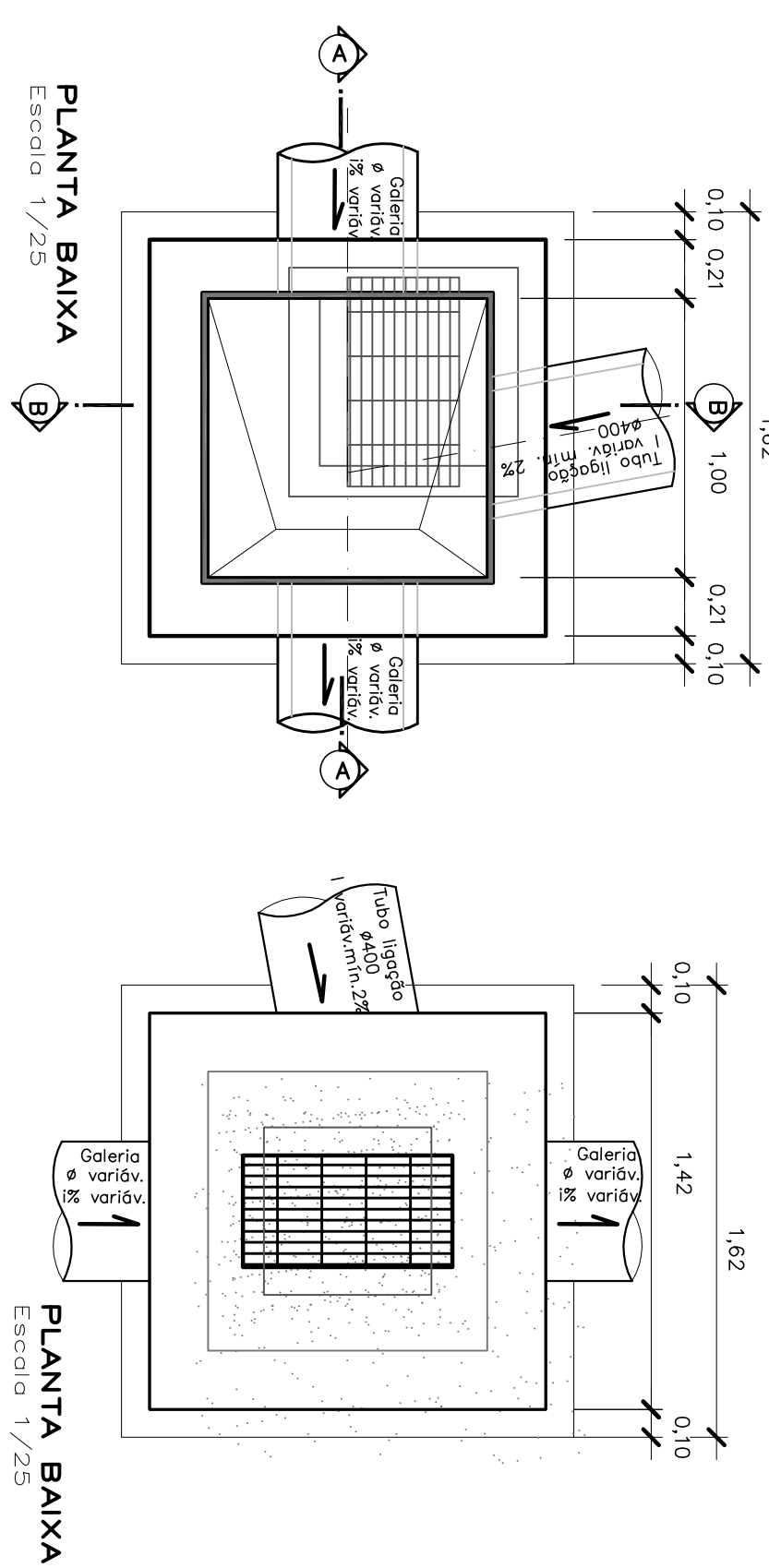
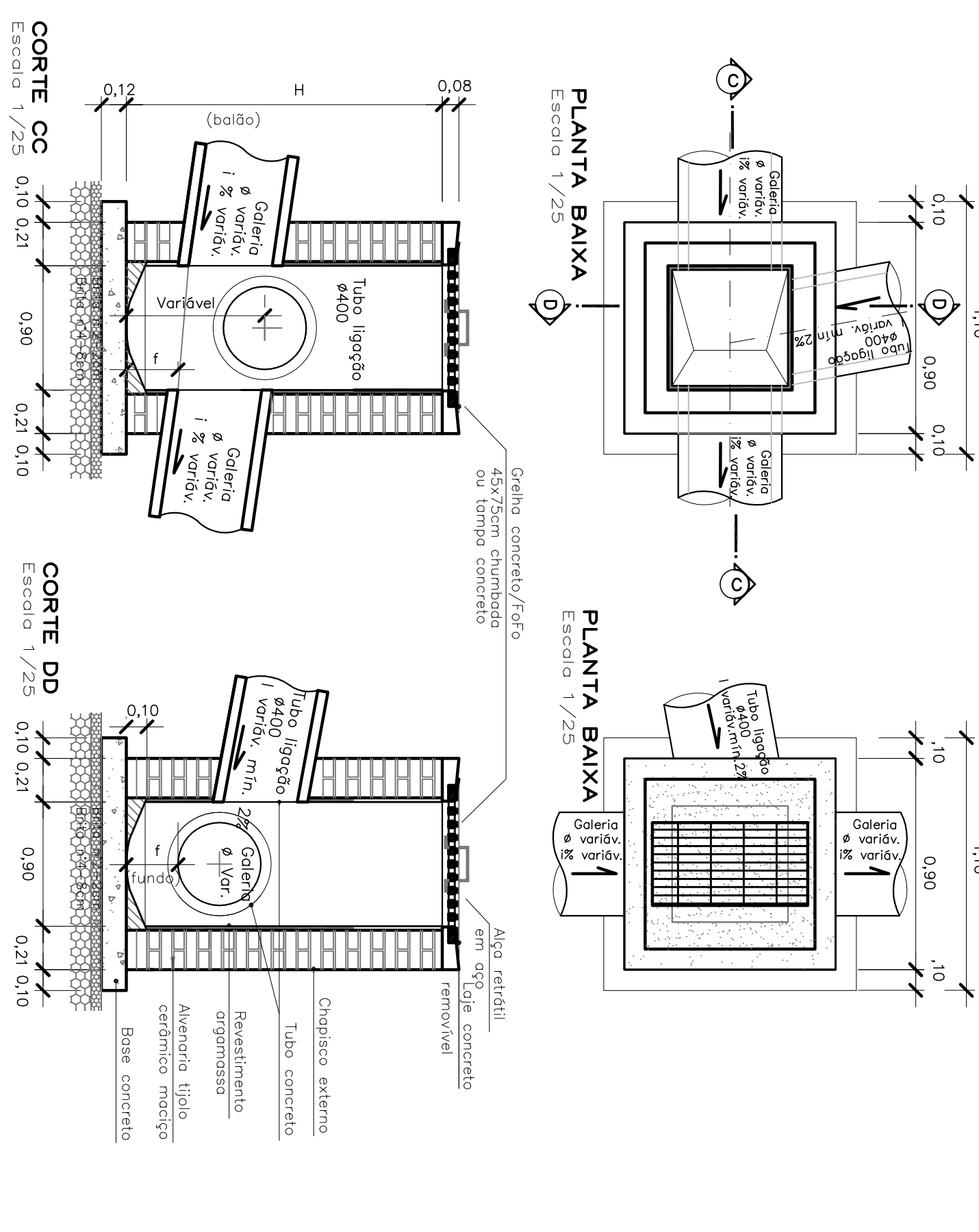
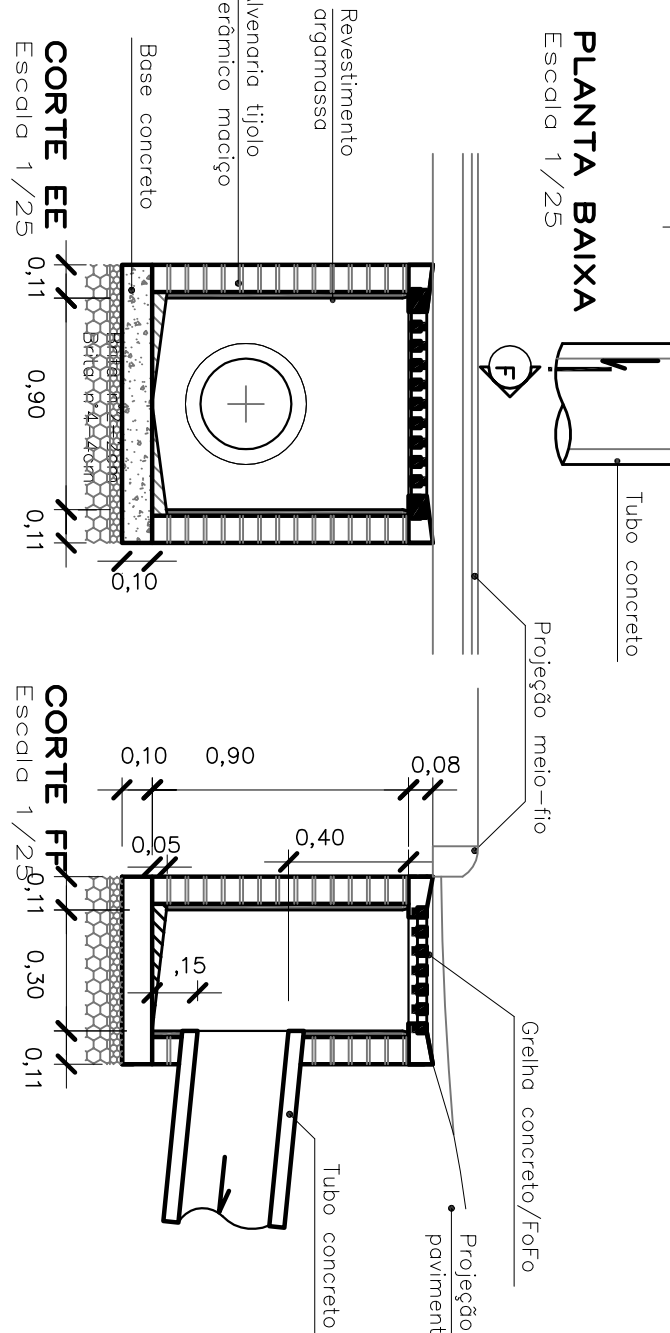
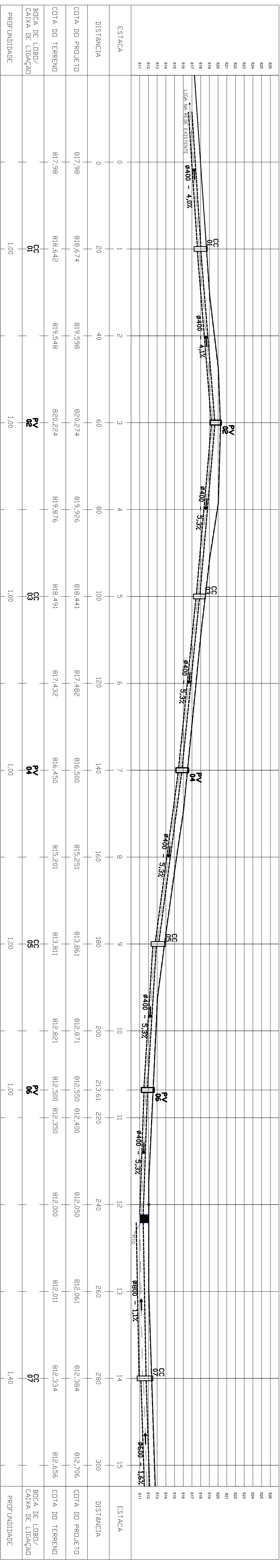
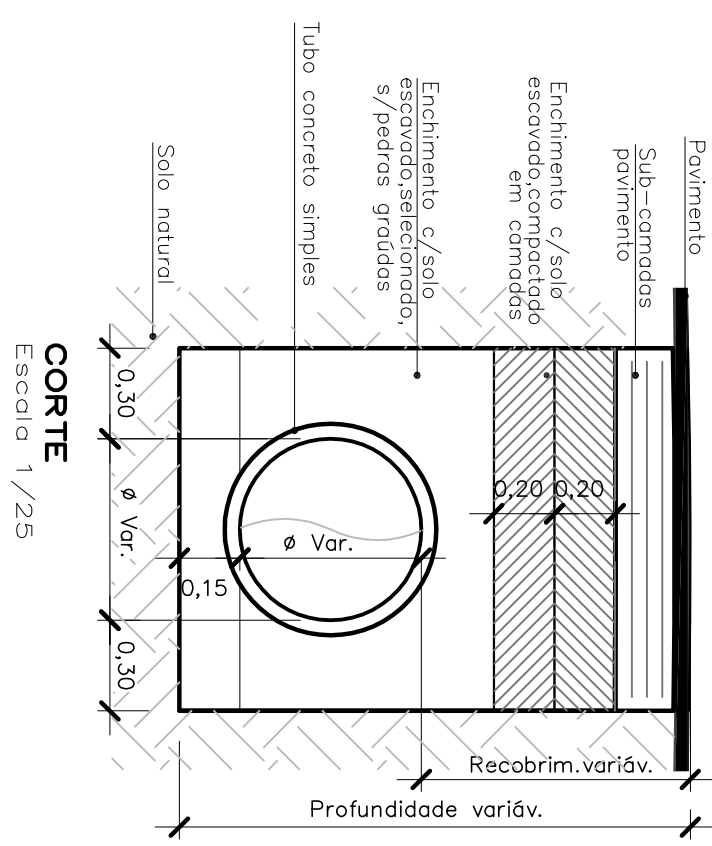


POÇO DE VISITA – PV
(c/boca-de-lobo e ligação)

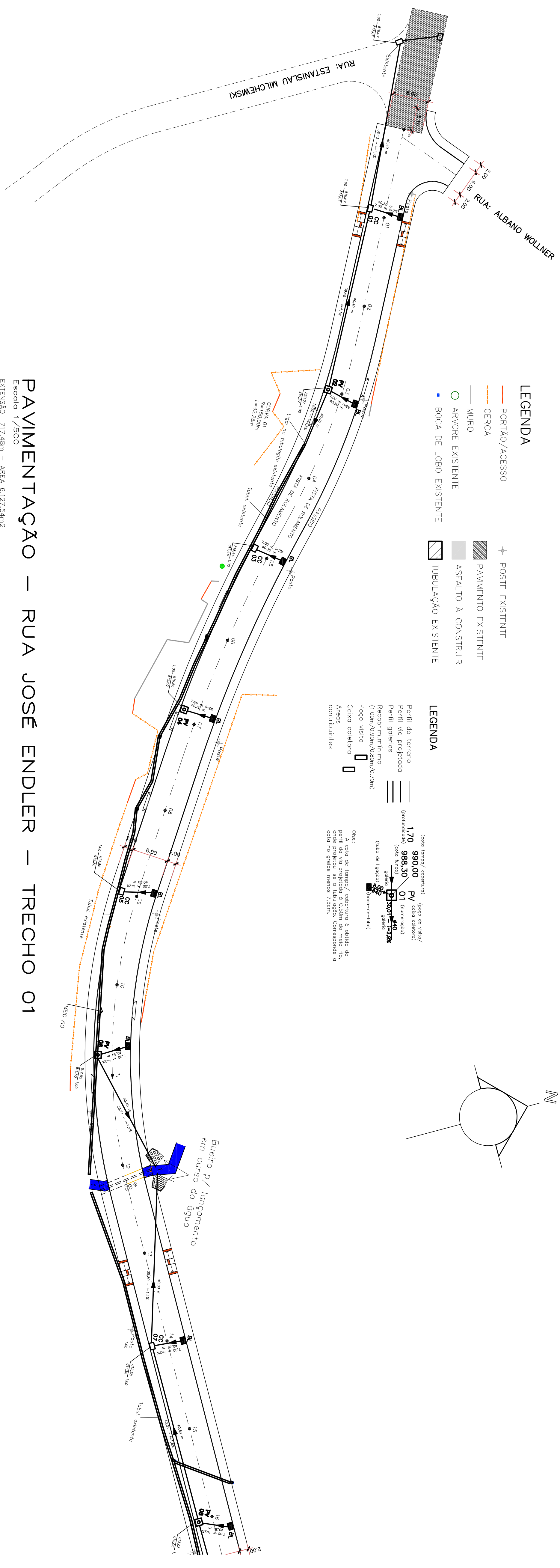
CAIXA COLETORA – CC
(c/boca-de-lobo e ligação)BOCA-DE-LOBO
SIMPLES

BOS



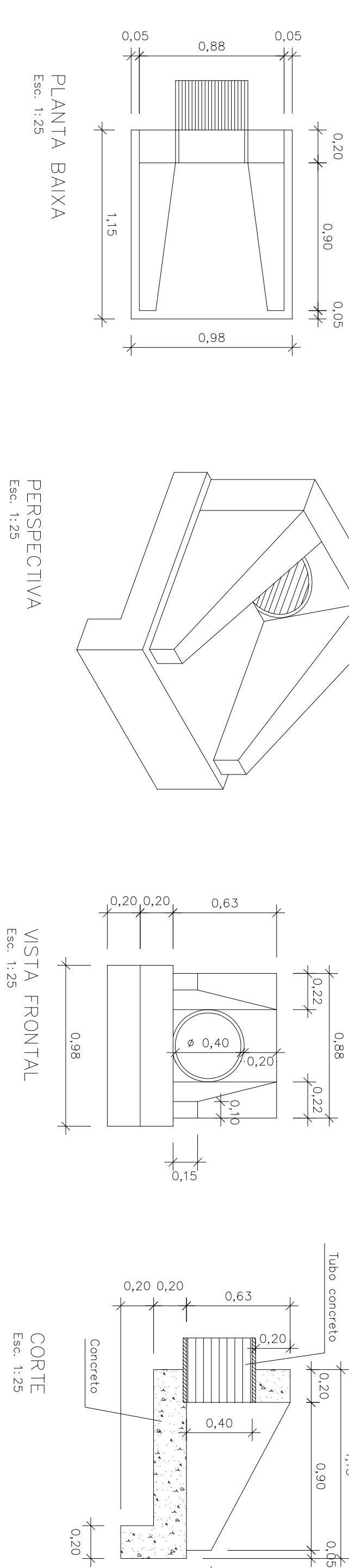
PERFIL LONGITUDINAL – RUA JOSÉ ENDLER – TRECHO 01
Escala horizontal = 1/400

Escala vertical = $1/250$

PAVIMENTAÇÃO – RUA JOSÉ ENDLER – TRECHO 01
Escala: 1/500

EXTENSÃO 717,48m - ÁREA 6.127,54m²

BUEIRO SIMPLES



RESUMD		trecho 1	
	EXTENSAD (m)	Ø TURB	
TRECHO	36,13	400	
EXIST+ CCI	39,59	400	
CCI - PVE		400	
PVE - CC3	12,55+EXIST	400	
CC3 - PVA	EXIST.	400	
PVA - CC5	EXIST.	400	
CC5 - PVE		400	
PVE - LANQ	23,71	400	
LANQ - CC7	33,97	800	
CC7 - PVA8	38,69	600	
PVA - CC9	42,80	600	

QUANTITATIVO

QUANTITATIVO	
BOCA DE LIBRO	POCO DE VISTA
8 unid.	2 unid.
CAJA COLETTIDA	BUERO
4 unid.	56,00 m
	11,95 m
	88,42 m
	33,97 m
	Ø 30
	Ø 40
	Ø 60
	Ø 80

ASSINATURAS	ASSINATURAS
-------------	-------------

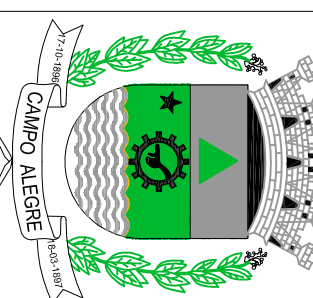
RUBENS BLASZKOWSKI
PREFEITO MUNICIPAL

ENG.º BRUNO SEEFFELD
CREA/SC 11483-4

PREFEITURA MUNICIPAL DE CAMPO ALEGRE

PAVIMENTAÇÃO - RUA JOSÉ ENDLER

Gestão: 2013 - 2016



PREFEITO MUNICIPAL RUBENS BLASZKOWSKI
SECRETÁRIO DE OBRAS SEBASTIÃO V. KONS
ENGENHEIRO CIVIL BRUNO SEEFFELD
DESENHISTA BRUNO SEEFFELD

PROJETO DRENAGEM - TRECHO 1

01/02

Exatilis	INDICADA	Data	AGOSTO/2013	Declaro	BRUNO SEEFELD
----------	----------	------	-------------	---------	---------------